

# Rental Chiller Package

## 200 Ton



### General System Data

Fully packaged system, completely assembled, arrives on job site ready for installation in minimal time. Chiller package includes pump matched specifically to range of operation, piping (includes pump bypass), and in-line Y-strainer.

### Equipment Features & Options

- 32' gooseneck trailer
- 25 hp mounted pump package
- Booster pump options
- Pump bypass option
- 6" Y strainer
- Louvered condenser hail guards
- Single point power
- Control transformer
- R-22 refrigerant
- Flow switch with safety interlock
- Voltage – 460V / 60Hz / 3Ø
- Circuit Breaker/s
- Across the line start
- Service isolation valve
- Low temperature Glycol options
- BAS Options

### Basic Equipment Data

Model	RTAA200
Refrigerant	R-22
Ambient Range	0-115°
Chilled Water Setpoint	40-60°
Chilled Water Setpoint with Glycol	39° or less
Refrigerant Circuits	2
# Compressors	2
Equipment Insurance Value	\$225,000

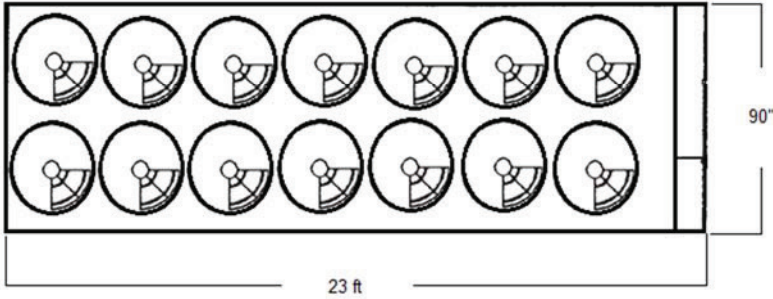
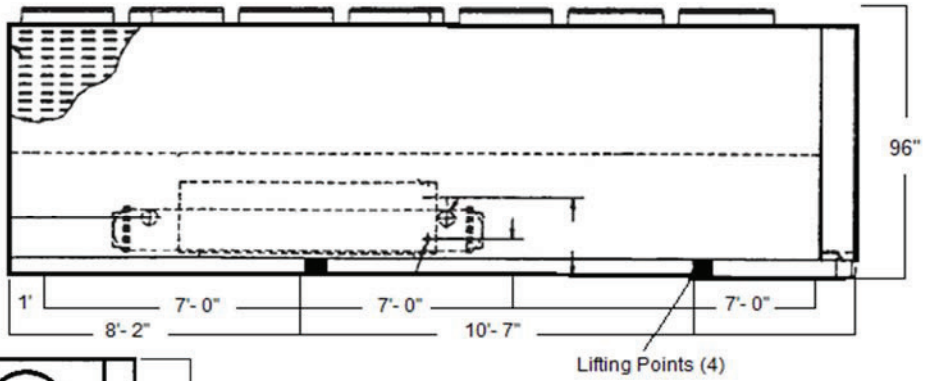
### Electrical Data

Nominal Voltage	460V / 60Hz / 3Ø
Single Point Power Connection (2 per Ø)	16 Series Cam Type
MCA (single point power connection)	406
MCA (single point power connection w/ pump)	436
RLA (single point power connection)	371
RLA (single point power connection w/ pump)	401

\* A separate 115 / 60 / 1, 15 amp customer provided power connection is required to power the evaporator heaters.

### Physical Data

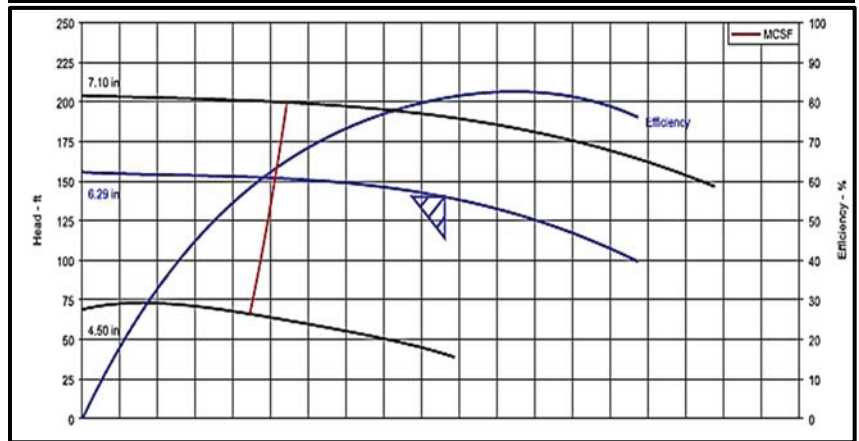
Length	23'
Length (with trailer)	32'
Width	90"
Width (with trailer)	102"
Height	96"
Height (with trailer)	130"
Operating Weight	12,470 lbs.



### Pump Data

Flow	480 GPM
Head	140 FT
Horsepower	25
RPM	3500
Cycle	60
Phase	3Ø
FLA	29.4

### Pump Performance



### Evaporator Data

Water Storage	61 Gallons
Minimum Flow	222 GPM
Maximum Flow	720 GPM
Nominal Flow	480 GPM
Water Side Max PSI	150 PSI
Water Connections	6" Flanged

### Evaporator Water Pressure Drop – 2 pass evaporator

